



DET NORSKE VERITAS
INITIAL LOAD LINE SURVEY

**INTERNATIONAL CONVENTION ON LOAD LINES, 1966
RECORD OF CONDITIONS OF ASSIGNMENT**

DNV Id. No.: **28725**

Name of ship: **WADI SAHAM**

Port of registry: **Fujairah**

Nationality: **United Arab Emirates**

Distinctive number or letters: **F4144**

Gross tonnage: **212**

Freeboard assigned as a ship of Type: **B**

Classification: **✠ 1A1 Tug**

Shipbuilders: **Damen Shipyards B.V.**

Yard Number: **3190**

Date of Build/Conversion: **1997**

Date of initial survey: **5 December 1996 (LR)**

Sister ship: **-**

List of plans attached to this report:

Only page 1 of 17 of Form No. 44.401a + LR Record of Conditions of Assignment

**THIS COPY IS TO BE
KEPT ONBOARD TOGETHER
WITH THE LOAD LINE
CERTIFICATE**

For report on
measurements for Load Lines,
See Form No. 44.402a

If any person suffers loss or damage which is proved to have been caused by any negligent act or omission of Det Norske Veritas, then Det Norske Veritas shall pay compensation to such person for his proved direct loss or damage. However, the compensation shall not exceed any amount equal to ten times the fee charged for the service in question, provided that the maximum compensation shall never exceed USD 2 million. In this provision "Det Norske Veritas" shall mean the Foundation Det Norske Veritas as well as all its subsidiaries, directors, officers, employees, agents and any other on behalf of Det Norske Veritas.

28725

REPORT No. 602538



INTERNATIONAL CONVENTION ON LOAD LINES, 1966
RECORD OF CONDITIONS OF ASSIGNMENT

LR Number 9150391

Ship's Name "WADI SAHAM"

Flag United Arab Emirates

Shipbuilder Damen Shipyards Gorinchem

Yard Number 3190

Date of Build/~~Commission~~ 1997

Freeboards Assigned as a Ship of Type B

Class Notation + 100 A1 Tug

Service Restriction Arabian Gulf and Gulf of Oman Service

Survey Port Rotterdam

The conditions of assignment shown on this form are a record of the arrangements and fittings provided on the ship and are in accordance with the requirements of the relevant regulations of the International Convention on Load Lines, 1966.

N.J.C. Mul & J.W. Roobol

Surveyor to Lloyd's Register of Shipping

Date 05.12.1996

For Head Office Use

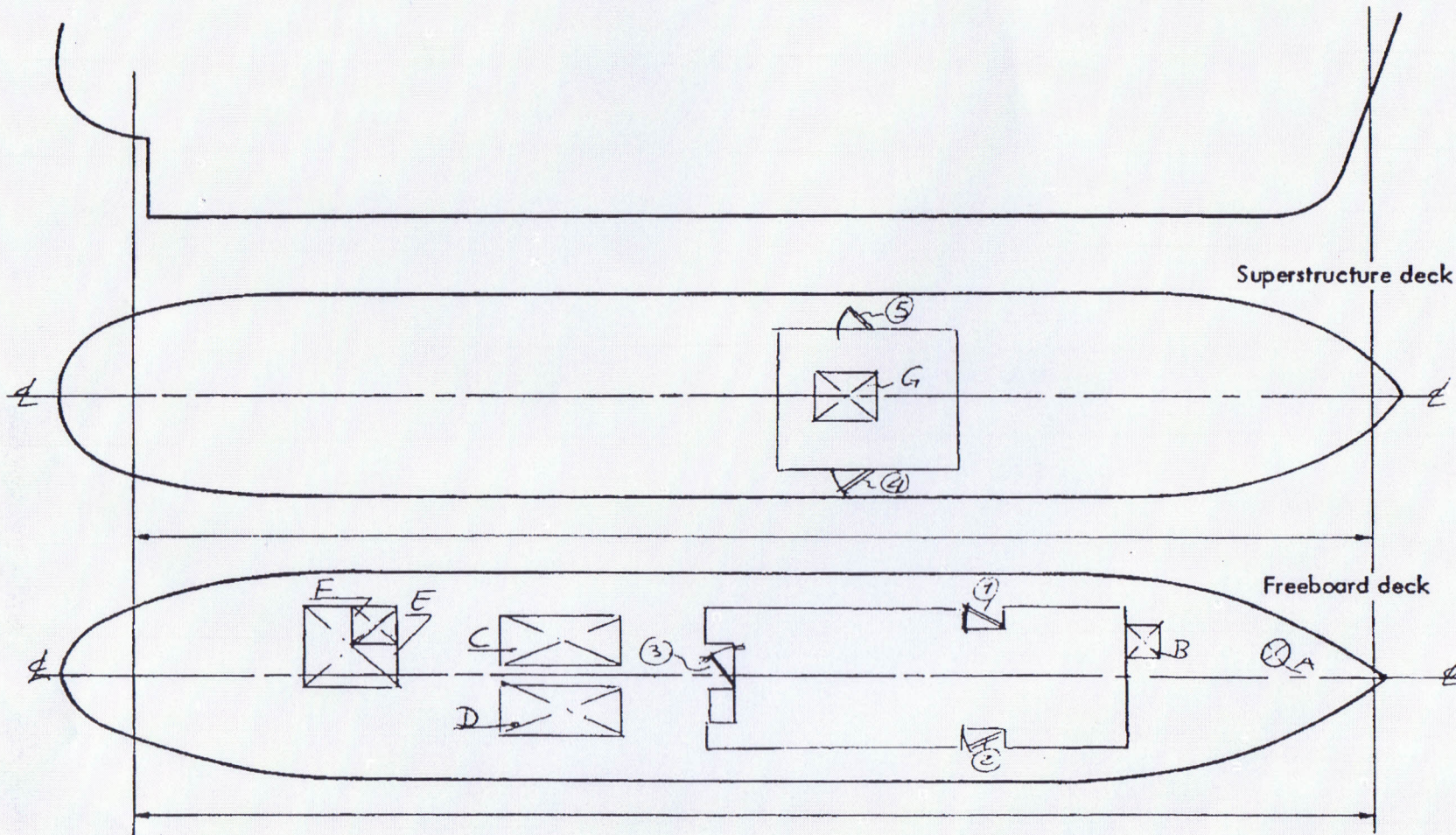
Owner's copy Form 2026 issued

At Periodical Surveys and Inspections it is to be verified that approved stability information is on board

LR Number 9150391

A plan of suitable size may be attached to this Report in preference to sketches on this page.

Disposition and dimensions of superstructures, trunks, deckhouses, machinery casings; extent of bulwarks, guard rails and wood sheathing on exposed deck, to be inserted in the diagrams and tables following; together with positions of hatchways, gangways, and other means for the protection of the crew; cargo ports, bow and stern doors, side scuttles, scuppers, ventilators, air pipes, companionways, and other items that would affect the seaworthiness of the ship.



LR Number 9150391

DOORWAYS IN SUPERSTRUCTURES, EXPOSED MACHINERY CASINGS AND DECKHOUSES PROTECTING OPENINGS IN FREEBOARD AND SUPERSTRUCTURE DECKS (Regs. 12, 17 & 18)

| Location | Ref. No. on Sketch or Plan | Number and Size of Openings | Height of Sills | Closing Appliances | |
|--|----------------------------|-----------------------------|-----------------|--|-----------------|
| | | | | Type and Material | Number of Clips |
| In forecastle bulkhead | | | | | |
| In poop bulkhead | | | | | |
| In deckhouses and companionways in Position 1 enclosing openings leading below | 1 & 2 | 2 x 1400 x 700 | 600 | [Hinged Watertight Steel Door][Hinged W.T. Steel Door] | 6 |
| | 3 | 1 x 1400 x 600 | 600 | | 6 |
| In exposed machinery casings on freeboard or raised quarter decks | | | | | |
| Inner doors in machinery casings on Type 'A' and 'B-reduced' ships | | | | | |
| In deckhouses in Position 2 enclosing openings leading within enclosed superstructures or below freeboard deck | 5 4 | 2 x 1800 x 700 | 350 | Hinged W.T. Steel Door | 6 |

LR Number 9150391

DOORWAYS IN SUPERSTRUCTURES, EXPOSED MACHINERY CASINGS AND DECKHOUSES PROTECTING OPENINGS IN FREEBOARD AND SUPERSTRUCTURE DECKS (continued)

| Location | Ref. No. on Sketch or Plan | Number and Size of Openings | Height of Sills | Closing Appliances | |
|---|----------------------------|-----------------------------|-----------------|--------------------|-----------------|
| | | | | Type and Material | Number of Clips |
| In exposed pump room casings | | | | | |
| In bridge bulkheads | | | | | |
| In machinery casings within superstructures or deckhouses on freeboard deck | | | | | |
| In exposed machinery casings on superstructure decks | | | | | |
| | | | | | |
| | | | | | |

LR Number 9150391

CARGO HATCHWAYS AT POSITIONS 1 AND 2 CLOSED BY PORTABLE COVERS AND SECURED WEATHERTIGHT BY TARPAULINS AND BATTENING DEVICES (Reg. 15)

| | | | | | | | |
|---|--|--|--|--|--|--|--|
| Position and Reference No. on sketch or plan | | | | | | | |
| Dimensions of clear opening at top of coaming | | | | | | | |
| Height of coaming above deck | | | | | | | |
| <p>PORTABLE BEAMS</p>  <p>Number</p> <p>Spacing</p> <p>$b_1 \times t_1$</p> <p>$D \times t_w$</p> <p>$b_2 \times t_2$</p> <p>Bearing surface</p> <p>Means of securing each beam</p> | | | | | | | |
| | | | | | | | |
| | | | | | | | |
| | | | | | | | |
| | | | | | | | |
| | | | | | | | |
| | | | | | | | |
| <p>PORTABLE COVERS</p> <p>Material</p> <p>Thickness</p> <p>Direction fitted</p> <p>Bearing surface</p> <p>Are wood covers fitted with galvanised end bands?</p> <p>Spacing of cleats</p> | | | | | | | |
| | | | | | | | |
| | | | | | | | |
| | | | | | | | |
| | | | | | | | |
| <p>TARPAULINS</p> <p>Number of layers</p> <p>Material</p> | | | | | | | |
| | | | | | | | |
| Means of securing each section of cover: | | | | | | | |

LR Number 9150391

CARGO HATCHWAYS AT POSITIONS 1 AND 2 CLOSED BY WEATHERTIGHT COVERS OF STEEL (OR OTHER EQUIVALENT MATERIAL) FITTED WITH GASKETS AND CLAMPING DEVICES (Reg. 16)

| | | | | | | |
|--|--|--|--|--|--|--|
| Position and Reference No. on sketch or plan | | | | | | |
| Dimensions of clear opening at top of coaming | | | | | | |
| Height of coaming above deck | | | | | | |
| Type of cover or Patent Name | | | | | | |
| Material | | | | | | |
| Position and Reference No. on sketch or plan | | | | | | |
| Dimensions of clear opening at top of coaming | | | | | | |
| Height of coaming above deck | | | | | | |
| Type of cover or Patent Name | | | | | | |
| Material | | | | | | |

LR Number 9150391

SMALL HATCHES (MACHINERY SPACE OPENINGS AND MISCELLANEOUS OPENINGS IN FREEBOARD AND SUPERSTRUCTURE DECKS (Regs. 17 & 18))

| Position and Reference No. on sketch or plan | A Forepeak | B Escape Accom. | C Repair Hatch ER | D Repair Hatch ER | E Rope Store | F Escape Ropestore | |
|--|-----------------------|-----------------|-------------------|-------------------|--|------------------------|---------------|
| Dimensions | Ø 560 | 800 x 600 | 3950 x 1900 | 3950 x 1900 | 2000 x 2000 | 700 x 500 | |
| Height of coaming | Flush * | 660 | Flush * | Flush * | 600 | 60 at top coaming of E | |
| COVER { | Material | Steel | Steel | Steel | Steel | Aluminium | Aluminium |
| | How attached | Bolts | Hinged O.B.S. | Bolts | Bolts | Toggles | Hinged O.B.S. |
| Number and spacing of toggles | 12 à 140 | 4 à 540 | 110 à 100 | 110 à 100 | 14 à 550 | 4 à 450 | |
| Position and Reference No. on sketch or plan | G Entrance wheelhouse | | | | | | |
| Dimensions | 1400 x 600 mm | | | | | | |
| Height of coaming | 300 | | | | | | |
| COVER { | Material | steel | | | | | |
| | How attached | Hinged O.B.S. | | | * provided with note: to be kept closed at sea | | |
| Number and spacing of toggles | 4 à 650 | | | | | | |

LR Number 9150391

VENTILATORS ON FREEBOARD AND SUPERSTRUCTURE DECKS (POSITIONS 1 AND 2) (Reg. 19)

| Deck on Which Fitted | Number Fitted | Coaming | | Type (State Patent Name if any) | Closing Appliances |
|---|---------------|------------|--------|------------------------------------|--|
| | | Dimensions | Height | | |
| Freeboard deck | 2 | ∅ 90 | 760* | Wiko | Cap with PVC float ball with closing device |
| | 2 | 600 x 770 | 2200 | Jalousie | Steel Hinged Fire Flap Toggled W.T. |
| | 2 | 1220 x 320 | 4500 | Jalousie | Steel Hinged Fire Flap Toggled W.T. |
| | 1 | 2100 x 550 | 900 | Jalousie | Steel Hinged Fire Flap Toggled W.T. |
| | 1 | 1500 x 800 | 2150 | Jalousie | Steel Hinged Fire Flap Toggled W.T. |
| Bridge Deck | 2 | ∅ 90 | 900 | Wiko | Cap with P.V.C. Float Ball with Closing Device |
| | 2 | 6" | 900 | Gooseneck | Steel Hinged Flap Toggled Watertight |
| | 1 | 5" | 900 | Gooseneck | Steel Hinged Flap Toggled Watertight |
| | 1 | 4" | 900 | Gooseneck | Steel Hinged Flap Toggled Watertight |
| * Height limited by towline/bulwark but located in well protected area. | | | | | |
| Are ventilators exceeding 900mm in height adequately supported? YES / NO APPLICABLE | | | | | |

LR Number 9150391

AIR PIPES ON FREEBOARD AND SUPERSTRUCTURE DECKS (Reg. 20)

| Deck on Which Fitted | Number Fitted | Coaming | | Type (State Patent Name if any) | Closing Appliances |
|---|---------------|----------|--------|------------------------------------|--|
| | | Diameter | Height | | |
| Freeboard Deck | 7 | ∅ 76 | 760 | Wiko | Cap with P.V.C. Ball Cap with P.V.C. Ball |
| | 2 | ∅ 90 | 760 | Wiko | |
| Are air pipes from oil fuel tanks provided with wire gauze screens? YES / NOT APPLICABLE | | | | | |
| Are air pipes exceeding 900mm in height adequately supported? YES / NOT APPLICABLE | | | | | |

LR Number 9150391

CARGO PORT AND OTHER SIMILAR OPENINGS (Reg. 21) INCLUDING VISORS AND RAMPS

| Position of Port | Dimensions of Opening | Distance of Lower Edge from Freeboard Deck | Securing Devices | Remarks |
|---|-----------------------|---|----------------------|---------|
| | | | | |
| Are cargo ports, visors and ramps in accordance with approved plans? | | | YES / NOT APPLICABLE | |
| Will the hydraulic securing arrangements if fitted remain locked in the event of hydraulic failure? | | | YES / NOT APPLICABLE | |

LR Number 9150391

SCUPPERS, INLETS AND DISCHARGES (Reg. 22)

| * State if Scupper or Discharge | Number | Pipe | | | From | Vertical Distance Above Top of Keel | | | ** Number, Type and Material of Discharge Valves | Position of Controls |
|---------------------------------|--------|----------|-----------|------------|----------------------------|-------------------------------------|-------------|-----------------|--|----------------------|
| | | Diameter | Thickness | † Material | | Discharge | | Uppermost Valve | | |
| | | | | | | Outlet in Hull | Inboard End | | | |
| -D | 1 | Ø88.9 | 8 | MS | Sewage Tank | 3550 | 3550 | 3550 | SDANR CS | Engine Room PS |
| D | 1 | Ø60.3 | 8 | MS galv. | Galley and sanitary spaces | 3400 | 3400 | 3400 | SDANR CS | Accommodation SE |

Notes:

1. Store, Engine Room and cofferdam drained via ship's bilge system.
2. Chainlocker drained by screwdown valve (operable from deck into forepeak).
3. Forepeak drained by electrically driven pump with outlet on forecastle deck via a SDANR valve.

* S - Scupper
D - Discharge

† MS - Mild steel
CS - Cast steel
GM - Gun metal
Any other approved material to be designated

** SD - Screw down
ANR - Automatic non-return
SDANR - Screw down automatic non-return

LR Number 9150391

SIDE SCUTTLES (Reg. 23)

| Position | Number Fitted | Clear Glass Size | Fixed or Opening | Material | | Thickness of Toughened Glass | Standards Used |
|------------------|---------------|--------------------|--------------------------|--------------|-----------|------------------------------|------------------------|
| | | | | Frame | Deadlight | | |
| Deckhouse front | 2 | Ø 350 | Fixed | Steel | Steel | 12 | ISO Standards are used |
| side | 1 | Ø 350 | Opening | Steel | Steel | 15 frosted | |
| side | 2 | Ø 200 | Fixed in door | Steel | Steel | 10 | |
| aft | 1 | Ø 200 | Fixed | Steel | Steel | 10 | |
| side | 6 | 450x350 | Opening | Steel | Steel | 12 | |
| Wheelhouse front | 1 | 1020x1060 | Fixed | Steel | | 15 | |
| | 2 | 1050x1060/ 920 | Opening | Steel | | 15 | |
| | 2 | 750x350 | Fixed | Steel | | 12 | |
| side | 2 | 400x1020 | Fixed | Steel | | 12 | |
| | 2 | 1025x1210/ 1000 | Fixed | Steel | | 15 | |
| | 2 | 750x350 | Fixed in door | Alum. bolted | | 10 | |
| | 2 | 1025x985/ 775 | Fixed | Steel | | 15 | |
| | 2 | 400x1200/ 1055 | Fixed | Steel | | 12 | |
| aft | 2 | 400x700 | Fixed | Steel | | 12 | |
| | 2 | 400x725 | Fixed | Steel | | 12 | |
| | 1 | 400x1020 | Fixed | Steel | | 12 | |
| | 2 | 375x1010/ 635 | Fixed | Steel | | 12 | |
| | 1 | 1680x1020 | Opening | Steel | | 15 | |
| | 2 | 1660x1060/ 840 | Fixed (with middle port) | Steel | | 15 | |

The vertical distance below the freeboard deck to the bottom sill of the lowest side scuttle is 3500 mm

LR Number 9150391

FREEING PORTS (Reg. 24)

| | Length of Bulwark | Height of Bulwark | Number and Size of Freeing Ports Each Side | Total Area Each Side |
|-----------------------------|-------------------|-------------------|--|----------------------|
| Freeboard deck after well | 19000 | 900/1000 mm | 1 x 2000 x 220 + 1x1000 x 220 | 2.86 m ² |
| Freeboard deck forward well | 13000 | 1000 mm | 3 x 1500 x 220 | 0.99 m ² |
| Superstructure deck | | | | |

State fore and aft position of each freeing port in relation to superstructure end bulkheads

{

 After well fr. 1 - 5

 fr. 8 - 23

 Forward well fr. 26 - 29

 fr. 3 - 3

 fr. 38 - 41

Particulars of shutters, bars or rails fitted to freeing ports: none

Height of lower edge of freeing port above freeboard and superstructure deck: nil

LR Number 9150391

PROTECTION OF THE CREW (Regs. 25 & 26)

Particulars of bulwarks or guardrails on freeboard and superstructure decks:

Forecastle deck: Height 1000 mm: Plating 7 mm: Top rail \emptyset 102x10 (Supported at alternative frames)

maindeck aft: Height 900/1000 mm: Plating 7 mm: Top rail \emptyset 102x10 (Supported at alternative frames)

Height aft is limited by towline/towing hook carried out for operational reasons between towing bit and bulwark a removable open railing is fitted (spaced 230 - 280 - 280 mm). Around deckhouse a handrail is fitted \emptyset 40 mm around wheelhouse a open railing is fitted (230-380-380).

Particulars of lifelines, walkways, gangways or underdeck passageways where required to be fitted:

TIMBER DECK CARGO FITTINGS (Reg. 44)

Particulars of uprights, sockets, lashings, guardrails and lifelines:

Is a copy of the approved timber deck cargo loading and lashing plan on board?

~~XXX~~ NOT APPLICABLE

OTHER SPECIAL FEATURES

LR Number 9150391

UNITED KINGDOM REGISTERED SHIPS

INITIAL SURVEY

The conditions of assignment shown on this form are a record of the arrangements and fittings provided on the ship and are in accordance with the requirements of the relevant regulations set out in Annex I to the Convention of 1966 and of the United Kingdom Merchant Shipping (Load Line) (Amendment) Rules 1979 (Statutory Instrument 1979 No. 1267)

Surveyor to Lloyd's Register of Shipping

Date

SUBSEQUENT PERIODICAL SURVEYS

I have completed the periodical survey and am satisfied that the fittings and appliances are in accordance with the particulars shown in this record and are in good condition and that approved stability information and, where applicable, information relating to loading and ballasting of the ship is on board.

Signature

Port of Survey

Date of Survey

| | | |
|-------|-------|-------|
| _____ | _____ | _____ |
| _____ | _____ | _____ |
| _____ | _____ | _____ |
| _____ | _____ | _____ |